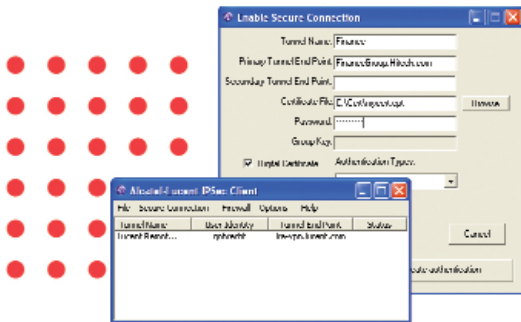


# Alcatel-Lucent IPsec Client

## REMOTE ACCESS VPN SERVICES



The Alcatel-Lucent IPsec Client enables you to provide high-value remote access VPN services for telecommuters and mobile workers with PCs running Microsoft Windows operating systems. The Alcatel-Lucent IPsec Client was expressly built to ease deployment of remote access solutions by combining standards-based IP Security (IPsec) features, a built-in “personal firewall,” and, in conjunction with the Alcatel-Lucent Security Management Server, a centralized management to deliver a totally secure, scalable solution that streamlines installation, administration, configuration, upgrades, and use of the client throughout your mobile workforce.



### FEATURES

- Integral IP security: stateful firewall, strong packet encryption, robust authentication options
- Built-in “personal firewall” provides complete protection, even for always-on cable and DSL connections
- Completely integrated, centralized management options available with the Alcatel-Lucent Security Management Server software and VPN Firewall Brick appliances
- Automatic security policy profile download at user log-in
- Detailed client status logs for accounting and troubleshooting
- Intuitive graphical user interface (GUI)
- Online help with comprehensive contents, index, and search capabilities
- End-user policy enforcement capability

### BENEFITS

- **Quick and simple implementation** — complete, fully integrated solution; point-and-click installation; “near zero” configuration
- **Connection versatility** — supports any connection mode: dial-up modem, WAN router, DSL, cable, wireless link
- **Streamlined VPN administration** — centrally provisioned and managed for large-scale remote access services
- **Cost-saving flexibility** — interoperable with Alcatel-Lucent VPN Firewall Brick security appliances, spanning SOHO to data center to central office requirements; ensures the right solution at the right price/performance point
- **Carrier-grade availability** — automatic failover to secondary tunnel endpoint
- **Ease of use** — user-friendly GUI; near-effortless session initiation; online help

### APPLICATIONS

- Managed VPN services
- Remote private intranet access
- Private extranet access
- Public Internet access

# TECHNICAL SPECIFICATIONS

## Platforms

- Windows 2000, Windows Server 2003, Windows XP

## Interoperability

- Alcatel-Lucent VPN Firewall Brick Security Appliances
- Alcatel-Lucent Security Management Server and Compute Server management platforms

## Connection Technologies

- Dial-up modem, DSL/ADSL, cable modem, wireless link or various NIC and PCMCIA cards

## Supported Standards

- IPSec Encapsulating Security Payload (ESP) with DES, Triple-DES and AES
- IPSec Authentication Header (AH) with HMAC-MD5 and HMAC SHA-1 authentication
- Diffie-Helman Group 1 and Group 2
- IPComp (LZS compression)
- X.509
- PKCS #12

## User Authentication

- Local passwords, RADIUS, SecurID, X.509 digital certificates with
- Entrust CA PKI and Verisign CA PKI
- Entrust secure USB tokens
- PKI Certificate requests (PKCS 12)
- CAPI Store Integration
- Automatic LDAP certificate retrieval

## RADIUS Parameter Download

- User-specific parameters configurable in administrator's RADIUS database applicable to IPSec Client user tunnels:
  - Local Presence address
  - Primary/secondary DNS
  - Primary/secondary WINS
  - Login timeout
  - Idle timeout
  - User group

## Notifications

- Delivers administrator-specified message when tunnel established; must be acknowledged to continue

## Software Upgrade Management

- Notifies when Client upgrade is available; single click upgrades the IPSec Client software with newer version

## Logging

- Maintains local logs of connection attempts, including detailed IKE and IPSec negotiation

## Tray Icon

- Indicates tunnel activity, firewall setting in effect and provides continuous traffic statistics

## DNS/WINS

- Automatically configures local primary and secondary DNS (Domain Name Server) and WINS (Windows Information Name Server) addresses

## Windows Domain Authentication

- Can automatically log users to a remote Windows Domain; when authenticated, user can access any configured domain resources, including file and print servers

## Custom Branding

- Provides the ability to customize the IPSec Client graphical user interface (GUI) with customer-specific images and text, both in installation process and runtime software

## Personal Firewall

- Includes a stateful personal firewall
- Configurable for active and inactive tunnels; active tunnel configuration controlled by administrator; inactive tunnel configuration controlled by end-user
- Configurations:
  - Block all
  - Pass all
  - Pass only client-initiated (outbound sessions only)

## UDP Encapsulation of IPSec

- Allows a telecommuter using an Internet service provider that assigns a private address and performs NAT on outbound connections, to transparently use the IPSec client
- For non-IPSec aware PAT devices, tunnels IPSec inside User Datagram Protocol (UDP) packets; repackages the IPSec packet into a new UDP packet destined to the Tunnel End Point and UDP port specified by the tunnel administrator

## Local Presence

- Assigns a local network address to the Alcatel-Lucent IPSec Client user's PC
- Allows complex connections, such as X-Windows, to be directed back from other hosts to the client host, using established network routing paths
- Assigns local addresses using a local pool managed by the Alcatel-Lucent Security Management Server, or one-at-a-time using the RADIUS parameter download feature

## Split Tunneling

- Permits simultaneous clear-text and encrypted traffic; system administrator configures all personal firewall settings and endpoint IP network behind tunnel; can disallow clear-text traffic entirely

## High Availability

- Can be configured and saved with a number of tunnels
- Each tunnel can have its own backup tunnel endpoint, in case the primary is not reachable

## Scriptable Command Line Interface

- Allows full external script control of Client tunnel set-up and tear-down

## Mobile IP Support

- Along with IPUnplugged Mobile IP Client, Alcatel-Lucent IPSec Client supports seamless and secure VPN tunnel in the mobile IP environments.

## ORDERING INFORMATION

The Alcatel-Lucent IPSec Client is included with the purchase of the Alcatel-Lucent Security Management Server.

Refer to the Alcatel-Lucent Security Management Server v9.2 for ordering details.

Additional management upgrades licenses are available:

COMCODES	DESCRIPTION
300953502	Management upgrade license to manage 100 additional simultaneous IPSec-based Remote Access VPN Client
300953510	Management upgrade license to manage 500 additional simultaneous IPSec-based Remote Access VPN Client
300953528	Management upgrade license to manage 1000 additional simultaneous IPSec-based Remote Access VPN Client
300953536	Management upgrade license to manage 10,000 additional simultaneous IPSec-based Remote Access VPN Client

## www.alcatel-lucent.com

Alcatel, Lucent, Alcatel-Lucent and the Alcatel-Lucent logo are trademarks of Alcatel-Lucent. All other trademarks are the property of their respective owners. Alcatel-Lucent assumes no responsibility for the accuracy of the information presented, which is subject to change without notice.

© 2007 Alcatel-Lucent. All rights reserved. 031939-00 Rev C 11/07

